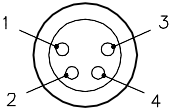
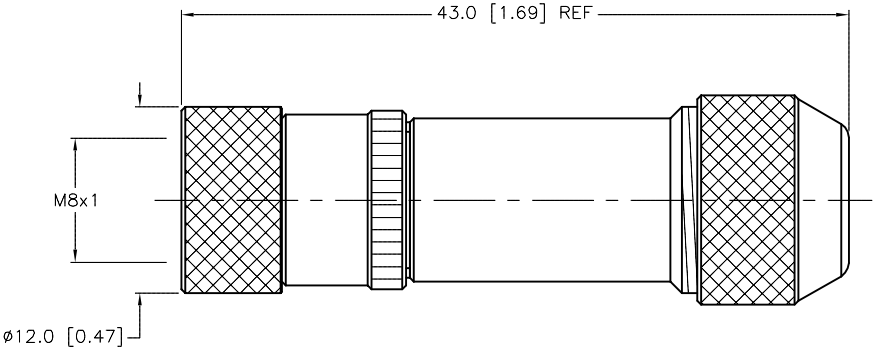
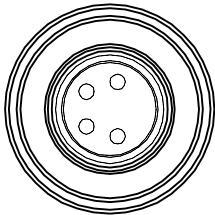


FEMALE END VIEW




SPECIFICATIONS

CONTACT CARRIER MATERIAL/COLOR	NYLON/BLACK
CONTACT MATERIAL/PLATING	BRASS/GOLD
COUPLING NUT MATERIAL/PLATING	BRASS/NICKEL
RATED CURRENT [A]	4.0 A
RATED VOLTAGE [V]	60 V
CABLE OUTLET	ø3.5 to ø5.5 (ø0.138 to ø0.216)
TERMINATION TYPE	SOLDER
WIRE SIZE	24 AWG
TEMPERATURE RANGE	-25°C to +85°C (-13°F to +185°F)
PROTECTION CLASS	MEETS IEC IP67



SOURCE DRAWING - FOR REFERENCE ONLY

					RELATED DOCUMENTS		3RD ANGLE PROJECTION		THIS DRAWING IS CONFIDENTIAL AND THE PROPERTY OF TURCK INC. USE OF THIS DOCUMENT WITHOUT WRITTEN PERMISSION IS PROHIBITED.		<div>TURCK INC</div> <div>High Technology Sensors and Automation Controls</div>		3000 CAMPUS DRIVE MINNEAPOLIS, MN 55441 1-800-544-7769 (763) 553-7300 (763) 553-0708 fax turck.com					
					1.													
					2.													
					3.													
4.																		
					MATERIAL		ALL DIMENSIONS DISPLAYED ON THIS DRAWING ARE FOR REFERENCE ONLY		DRFT		RDS		DATE 08/05/14		DESCRIPTION  CM 5141-0			
					SEE SPECIFICATIONS				APVD		L.H.		SCALE 1=.5					
					FINISH		CONTACT TURCK FOR MORE INFORMATION		UNIT OF MEASUREMENT  MILLIMETER [ INCH ]		IDENTIFICATION NO.  U2-04646		REV  B					
					SEE SPECIFICATIONS													
B	UPDATE DESCRIPTION				NF	01/15/15	48648											
REV	DESCRIPTION				BY	DATE	ECO NO.					FILE: U2-04646		SHEET 1 OF 1				